

The table below shows the authorized functions for each account level.

Ladder Editor Account Levels			
Account Level	Backup User	User	Manager
Login	backup ¥	user ¥	admin ¥
Password	[NONE]	0	00000000
Authorized Functions	Reading Reading-in name files Printing Cross refencing Text output	Reading Reading-in name files Printing Cross refencing Text output Saving	Reading Reading-in name files Printing Cross refencing Text output Saving Managing user accounts

¥ No Login required in Easy Mode.

There are two different ways to manage user accounts in Ladder Editor. Easy and Standard.

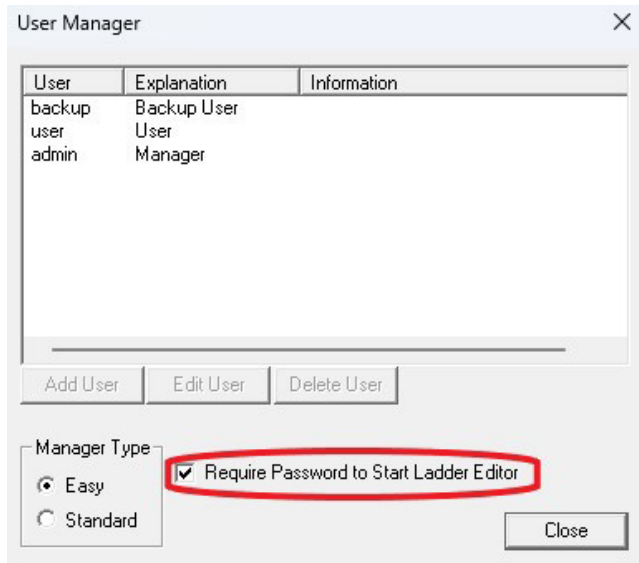
Easy as the name implies uses only the three default Account Levels that are included with the software.

Standard allows the Manager level to customize user access based upon their needs.

User Account Management tips.

How to remove password the required at program startup. This applies to Easy Mode only.

1. Log in as Manager.
2. Select The "Option" menu then select "Access Control" then "User Manager..."



3. Uncheck the “Require Password to Start Ladder Editor”

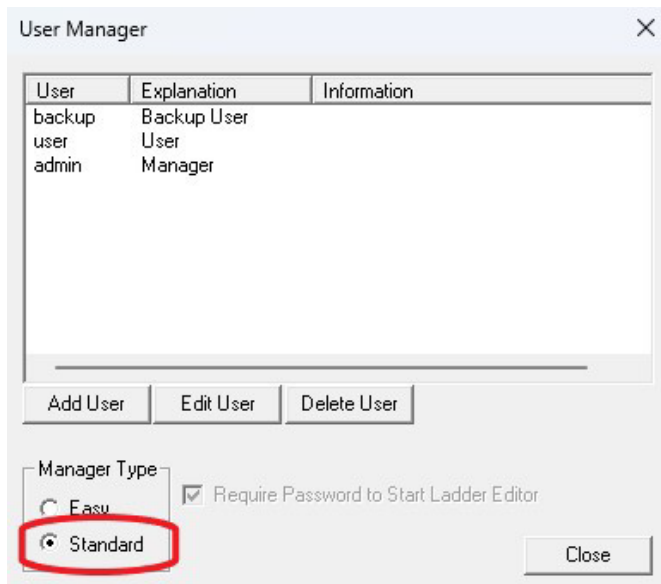
This is a global setting for all three default Account Levels: backup user, user, and Manager.

The next time that Ladder editor is started it will not require a password and will default to Backup User.

How to add users in Standard Mode.

Log in as Manager.

Select The “Option” menu then select “Access Control” then “User Manager...”



Select the Standard radio button.

The image shows a dialog box titled "Register a New User" with a close button (X) in the top right corner. The dialog contains the following elements:

- Login Name:** A text input field.
- Account Level:** A dropdown menu with a downward arrow, currently showing options 1, 2, and 3.
- Password:** A text input field.
- Confirm Password:** A text input field.
- Buttons:** "OK" and "Cancel" buttons at the bottom right.

1. Type in a Login Name.
2. Select the Account Level from the dropdown menu.
 - 1 => Backup User
 - 2=> User
 - 3=> Manager
3. Type in a Password.
4. Confirm the Password.
5. Select OK.

You can only delete users created by the Manager. You cannot delete any of the three default users.