



UWI ARC FILE VIEWER UTILITY

Introduction

Files downloaded from your YRC1000 controller are in ASCII text and can be viewed by most any text editing program. However, the data files may appear cryptic and difficult to interpret. A utility program was created to allow users to view Arc Start (ARCSRT.CND) and Arc End (ARCEND.CND) files in a friendlier format to get information to review and document their weld settings. The viewer uses the power source configuration file (WELDPROC.DAT) to format the settings according to the power source used. The viewer has side-by-side displays so Arc Start and Arc End files can be displayed at the same time or Arc Start/End files can be loaded in both locations to make it easier to compare different files next to each other. Some edit features allow columns to be moved or removed to change the appearance of the data fields. This is only a viewer, so data can not be changed or saved to load back into the robot.

```

ARCSRT - Notepad
File Edit Format View Help
\\ARCSRT EN 1
1
1
///COMMENT
0,12.9
3,1
0,0,0,12322
0.0,0.0,15.0,3.4
0.01,5.00,5.00,0.00
0.00,0.00,0.00,0.00
0.10,0.01,0.00,0.00,1
1,10000
0,0.1
0.0,0.0,0.0
0,0,0
0,0.0,0
0.00,0.00,0.0
0.00,0.0,0.0
0.0,0.0,0.0
0,0,1
0,0
///EXTDATA
250,0,50,0
25,0,0,0
0,0,0,0
250,0,50,0
25,0,0,0
0.0.0.0
    
```

Arc File text

Tab: 1 - Process Selection *****			
Process Number	4		(1 - 16)
45ST RMD Steel E70 0.045 i...	4006		
Welder Brand	Miller		
Tab: 2 - Strike Parameters			
Gas Preflow Time	0.1 (sec)		(0.0 - 2.0)
Run-in WFS	150 (in/min)		
Dynamic Start	DISABLE		(0 = DISABLE, 1 = ENABLE)
Tab: 3 - START Condition			
Stard CND Enable/Disable	DISABLE		(0 = DISABLE, 1 = ENABLE)
Tab: 4 - MAIN Condition			
Robot Speed	12.4 (mm/sec)		(0.1 - 1500.0)
Wire Feed Spd	180 (in/min)		(50 - 1000)
Arc Adjust	50 (%)		(1 - 99)
Arc Control	25		(1 - 50)
Tab: 5 - Other options			
Arc Retry	DISABLE		(0 = DISABLE, 1 = ENABLE)
Arc Restart	DISABLE		(0 = DISABLE, 1 = ENABLE)
Arc Monitoring	ENABLE		(0 = DISABLE, 1 = ENABLE)
Position Set Zone	UNUSED		(0 - 4)
Weld Path Shift	DISABLE		(0 = DISABLE, 1 = ENABLE)
DP: Dual Pulse	DISABLE		(0 = DISABLE, 1 = ENABLE)

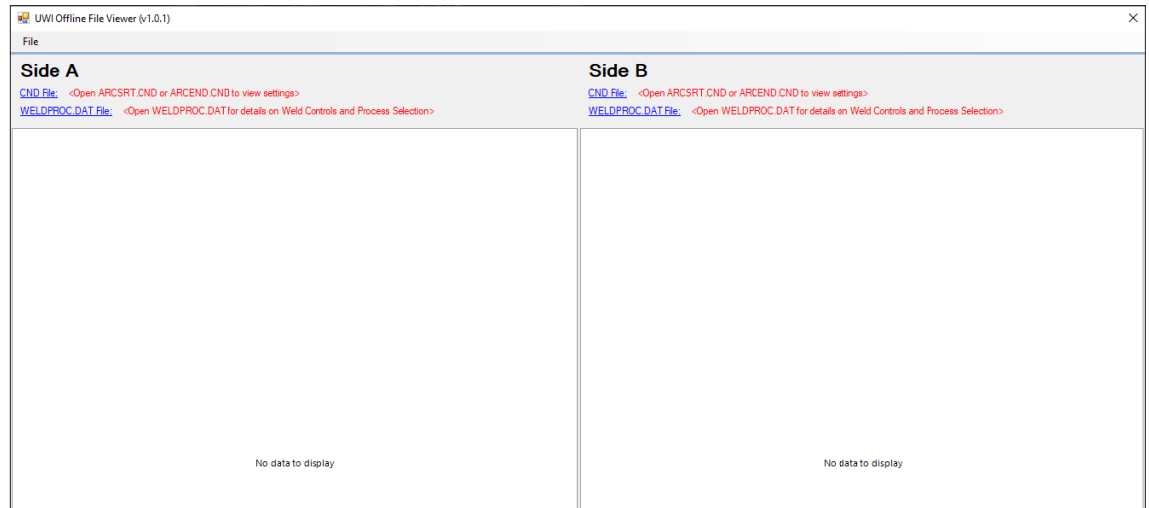
Arc File in UWI Offline File Viewer application

The utility is supplied as a compressed .zip file which needs to be extracted on your computer. The viewer does not install an application on your computer. There is an application file (offlineCndFileViewer.exe) inside the UWI Offline File Viewer folder (along with several supporting files) that needs to be opened.

Name	Date modified	Type	Size
Microsoft.VisualStudio.Shell.Interop.o.v	3/17/2022 9:29 AM	XML Document	340 KB
Microsoft.VisualStudio.Shell.Interop.dll	3/17/2022 9:29 AM	Application exten...	260 KB
Microsoft.VisualStudio.Shell.Interop	3/17/2022 9:29 AM	XML Document	1,700 KB
Microsoft.VisualStudio.TextManager.Inter...	3/17/2022 9:29 AM	Application exten...	56 KB
Microsoft.VisualStudio.TextManager.Inter...	3/17/2022 9:29 AM	XML Document	317 KB
Microsoft.VisualStudio.TextManager.Inter...	3/17/2022 9:29 AM	Application exten...	112 KB
Microsoft.VisualStudio.TextManager.Inter...	3/17/2022 9:29 AM	XML Document	811 KB
OfflineCndFileViewer	3/17/2022 9:29 AM	Application	62 KB
OfflineCndFileViewer.exe.config	3/17/2022 9:29 AM	CONFIG File	1 KB
OfflineCndFileViewer.pdb	3/17/2022 9:29 AM	PDB File	132 KB
Telerik.WinControls.dll	3/17/2022 9:29 AM	Application exten...	2,723 KB
Telerik.WinControls.GridView.dll	3/17/2022 9:29 AM	Application exten...	1,197 KB
Telerik.WinControls.GridView	3/17/2022 9:29 AM	XML Document	914 KB
Telerik.WinControls.Themes.Windows8.dll	3/17/2022 9:29 AM	Application exten...	205 KB
Telerik.WinControls.UI.Design.dll	3/17/2022 9:29 AM	Application exten...	2,388 KB
Telerik.WinControls.UI.dll	3/17/2022 9:29 AM	Application exten...	4,215 KB

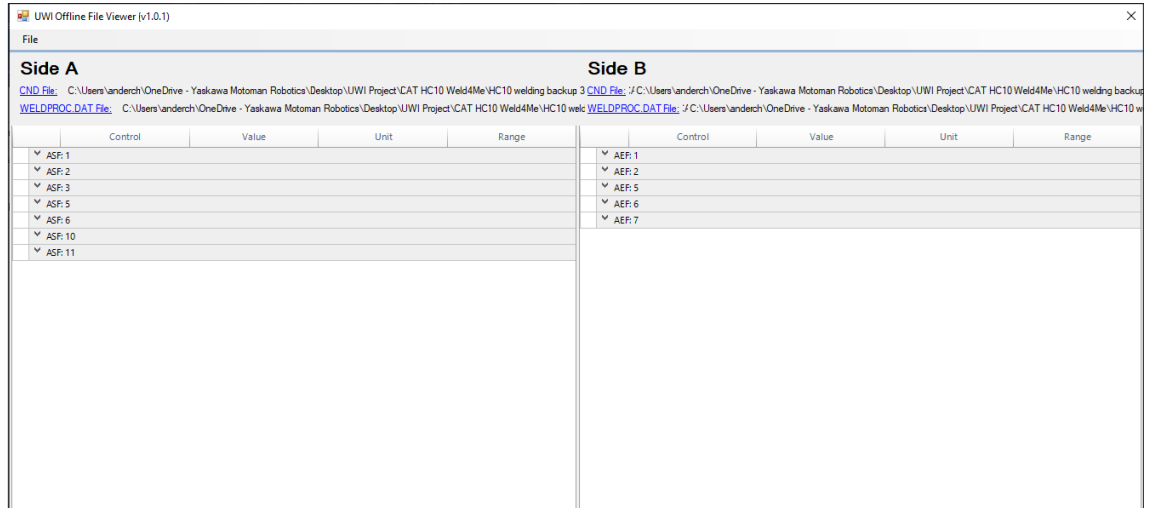
Instructions for use:

The viewer opens with blank screens on two sides (Side A and Side B). Click on the blue text to open a file window to navigate to the file location with the data files you want to open. The two sides are independent so you may load Arc Start files on one side and Arc End files on the other side or files from two different cells for side-by-side comparison.



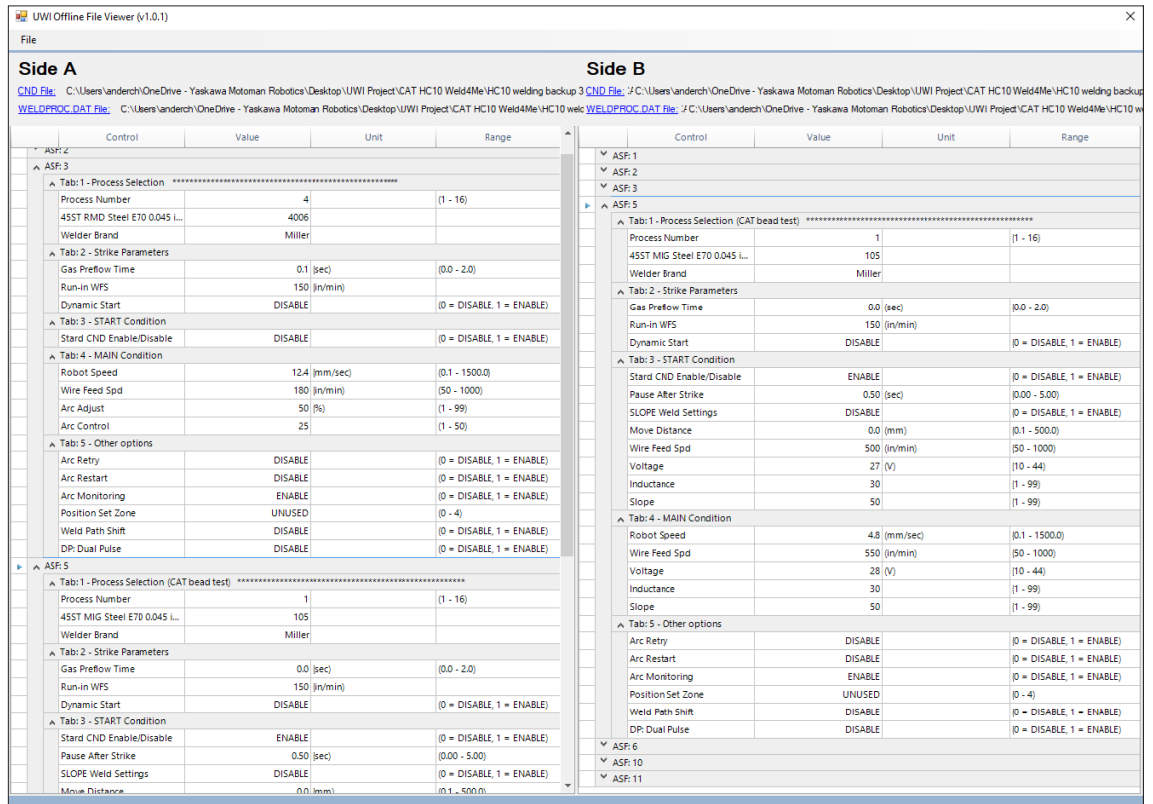
UWI Offline File Viewer initial screen

Arc Files appear in the screen as a compressed line. Only the files with data will be shown. Clicking the arrow on the left will expand the view to show the data in that file. Multiple files can be expanded and a scroll bar will navigate between them.



UWI Offline File Viewer with Arc Files that have data

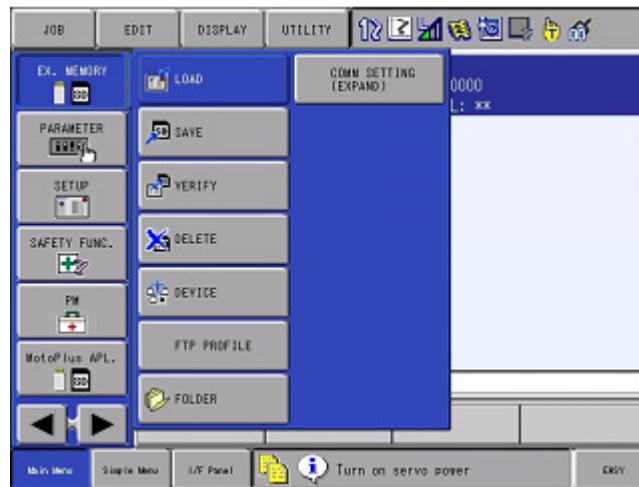
Right clicking the boxes next to the expanded fields will display some edit options to cut or move rows to allow you to display the fields that are of interest.



UWI Offline File Viewer with Arc Files expanded to show data fields

Saving Arc Files:

Arc Data Files are downloaded to USB memory stick or SD card in the pendant. Select the Ex. MEMORY menu and SAVE menus. It is possible to create and navigate between folders on the memory device. Select the FILE/GENERAL DATA field of files to SAVE.



Scroll down with the cursor key and press SELECT to mark the Arc Files and Weld Process File. Press ENTER to download and acknowledge the SAVE prompt.

