

14.4 Loading a Ladder Program with Different System Section



When the board with the software version changed the initial ladder program of the system section is newly delivered for function addition or improvement, in order to use the ladder program as is of the previous version being used, the ladder program which has the different system section can be loaded just for one time with the following operation:

1. Select { EX.MEMORY } under the main menu
2. Select { LOAD }
3. Select [I/O DATA]
4. Select { UTILITY } under the menu
5. Select { LOAD SYSTEM CIO }
 - A check mark is added to the left of “LOAD SYSTEM CIO.”
 - The message indicating “Save current CIOPRG.LST. The CIOPRG.LST of which system ladder was changed can be loaded.” appears.



6. Select { EX.MEMORY } under the main menu
7. Select { SAVE }
8. Select [I/O DATA]
9. Select [C.I.O PRGM]
10. Press [ENTER]
11. Select “YES “
 - The current concurrent IO program is saved.
12. Select { EX.MEMORY } under the main menu
13. Select { LOAD }
14. Select [I/O DATA]

14 Editing Ladder Programs

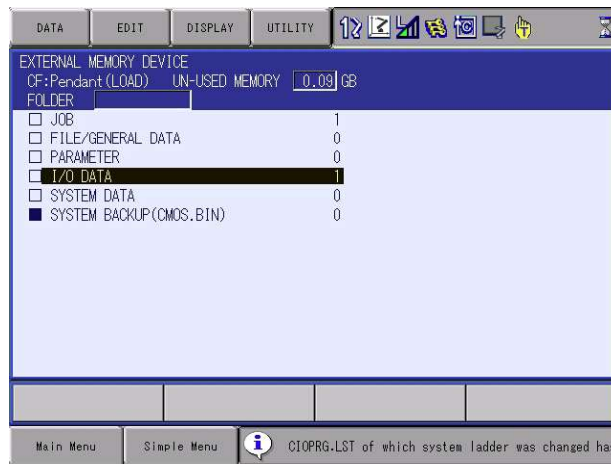
14.4 Loading a Ladder Program with Different System Section

15. Select [☐ C.I.O PRGM]

16. Press [ENTER]

17. Select " YES "

- A concurrent IO program with different system section is loaded.
- The message indicating "The CIOPRG.LST of which system ladder was changed has been loaded." appears.



If you turn ON the power supply again or change the security level while loading the ladder program with different system section, redo the above load operation from the beginning.